

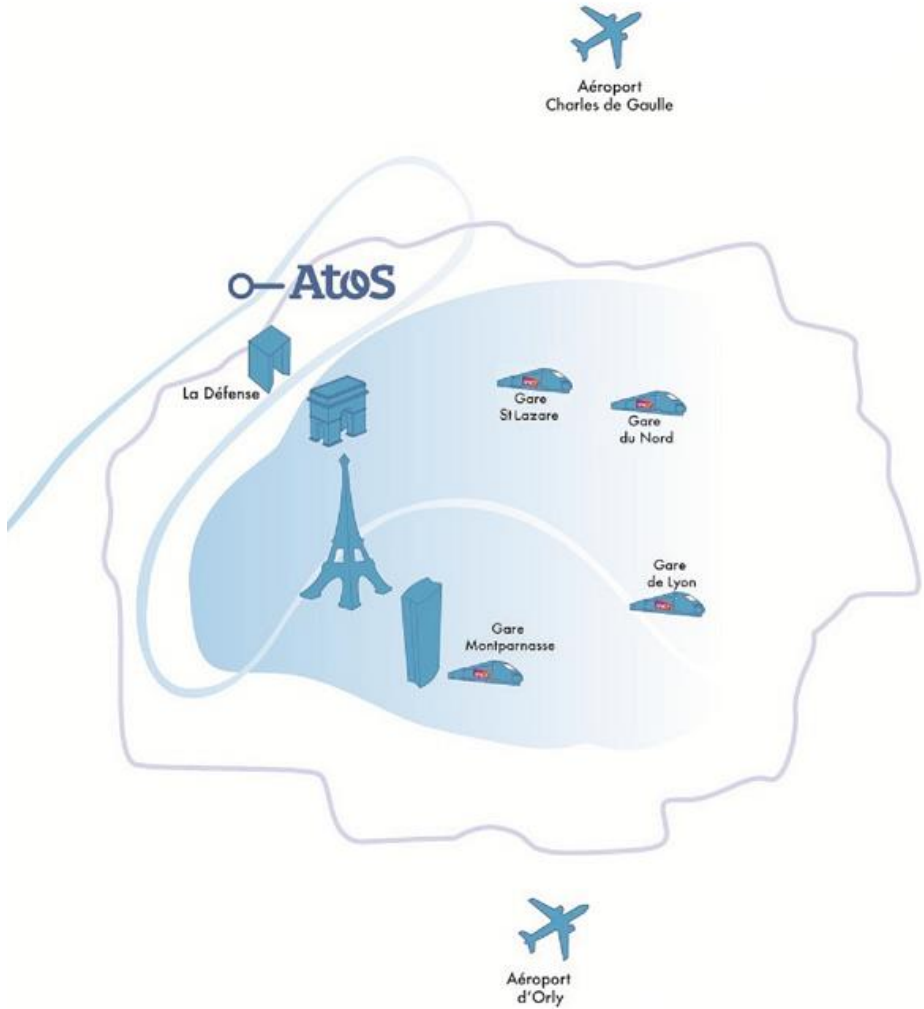
# Campus Atos

## Plan d'accès / *Access plan*

Atos - River Ouest - 80 Quai Voltaire - 95870 Bezons



# Atos in "Ile de France"





# *By car from the speedway A86,*

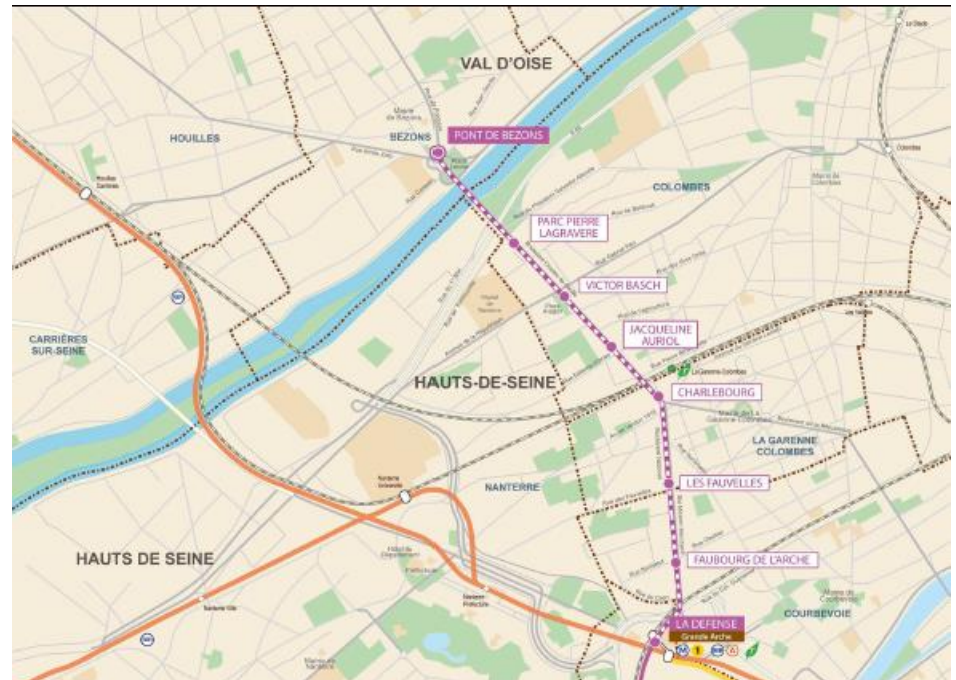
- ▶ **From Paris Porte Maillot, La Défense, Nanterre,** follow Colombes, Saint-Denis, Cergy Pontoise
- ▶ **From Cergy-Pontoise,** follow Nanterre, La Défense, Paris-Porte Maillot
- ▶ Take the exit **2A ou 2** Colombes, Petit-Colombes, La Garenne-Colombes, Bezons
- ▶ At the crossroad with the Charles de Gaulle boulevard take Bezons bridge
- ▶ After the bridge, turn right at the quayside of the Seine, then take the left exit to River Ouest
- ▶ Or from Jean Jaurès street, turn right after McDonald's
- ▶ Parking access



# By public transport (Tram T2)

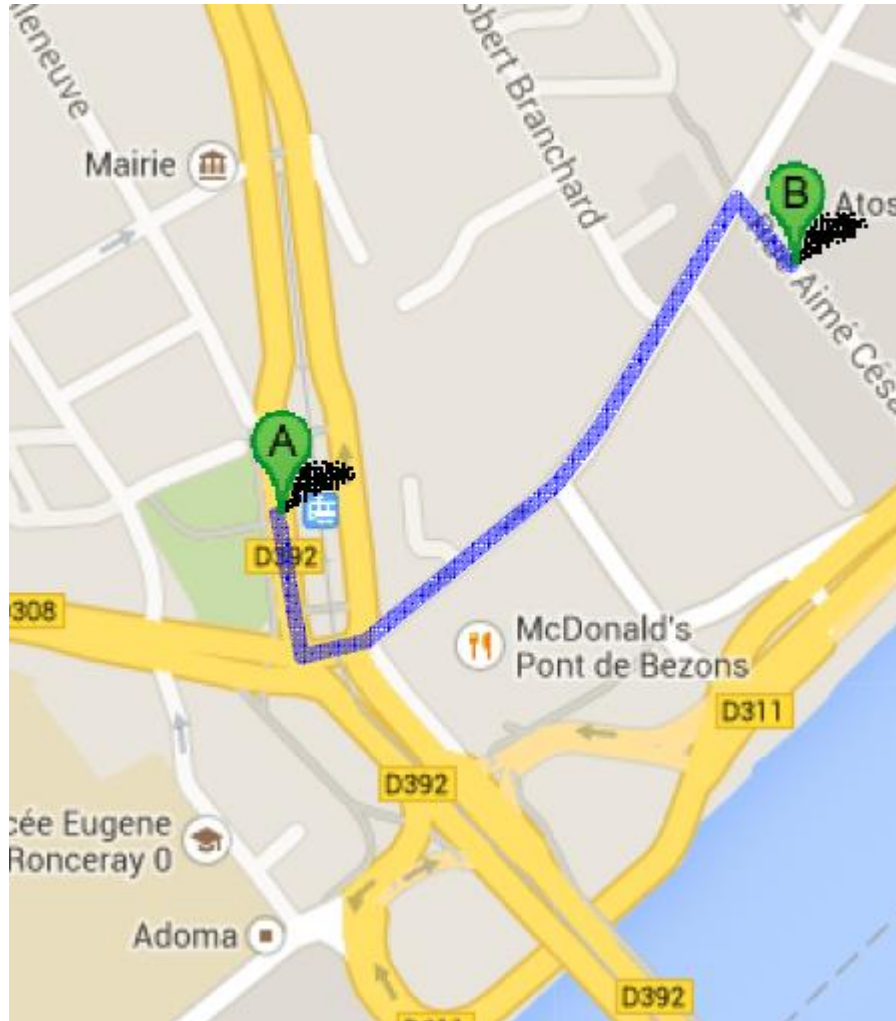
## ▶ Tram T2

- From **Paris Porte de Versailles to Bezons via La Défense Grand Arche**
- **From 5:30 am to 1am the following day**
  - From 7am à 10 am and from 4pm to 8 pm : trains are every 4' à 6'
  - From 10 am to 4 pm: train are every 9'
  - Before 7 am and after 8 pm : train are every 9' à 15'
  - After 10 pm : train are every 15'
  - After 11 am : a trains are every 20'



**Please note that, if there is a problem with the Tramline T2, it is advisable to use the bus lines RATP 272, 367, 262 or the shuttle buses Atos/Savac.**

# Walking from the Tram Station to River Ouest

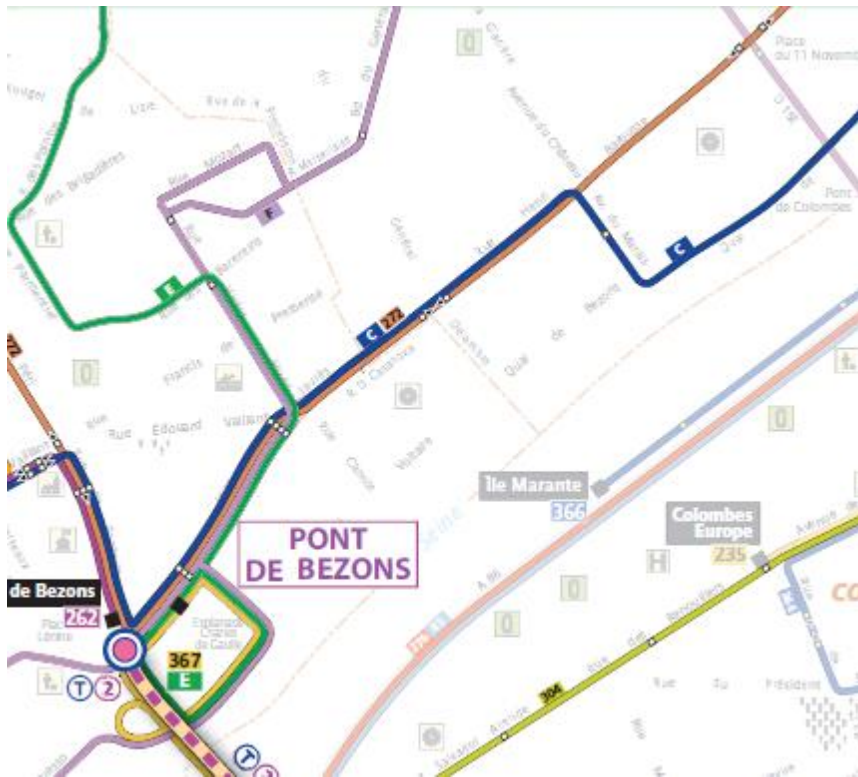




# By public bus (RATP)

## RATP 272

Argenteuil /Sartrouville Station



## RATP 367

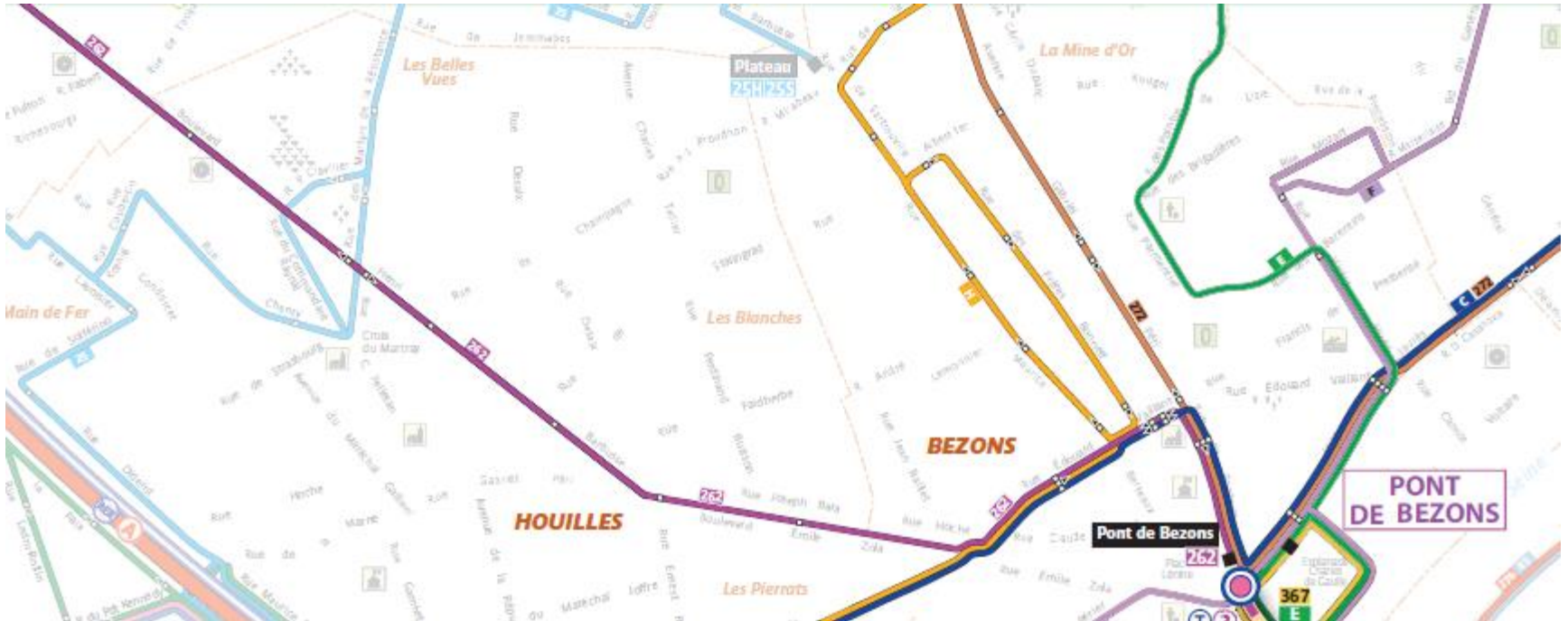
Rueil (RER A) station / Pont de Bezons via Nanterre Université



# By public bus (RATP)

## RATP 262

Maisons-Laffitte (RER A) / Pont de Bezons

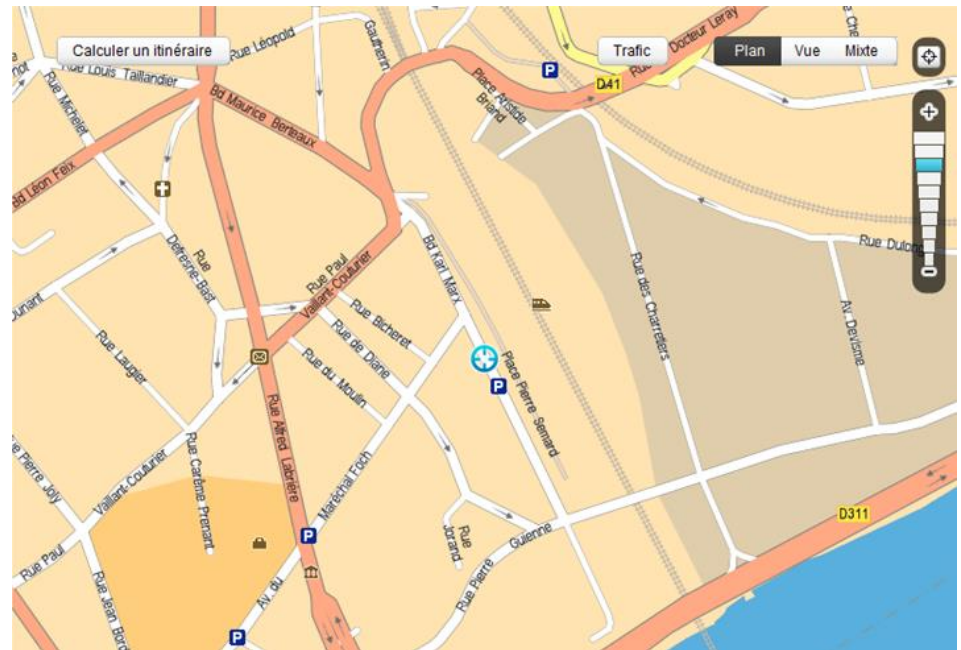


# By shuttle service from Argenteuil

## ► From **Argenteuil station (Transilien)**

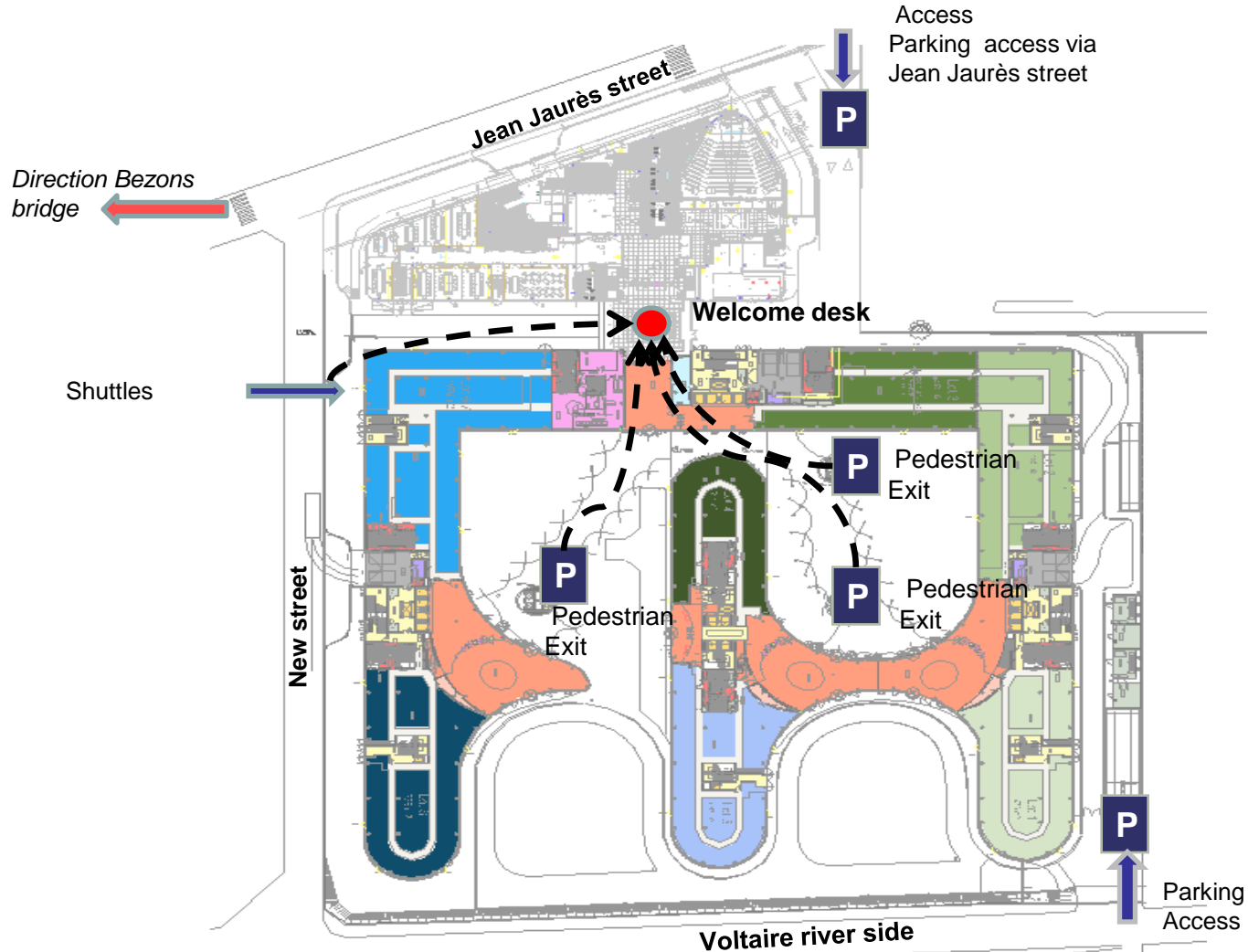
- From the train station St-Lazare. The stop is located on the sidewalk of the Evangelical church located in front of the station at 29 Bld Karl Marx in Argenteuil

\* timetable at end of document





# Inside River Ovest



# Shuttle timetables

since Marsh 24<sup>th</sup>,2013

**A compter du 02/01/2014**

Horaires Navette  
**Gare d'Argenteuil / River Ouest**  
Du Lundi au Vendredi

Départs de Gare d'Argenteuil	Départs de River Ouest
7h45	17h10
7h55	17h30
8h05	17h40
8h15	17h50
8h25	18h00
8h35	18h10
8h45	18h20
8h50	18h30
9h00	18h40
9h10	18h50
9h20	19h00
9h30	19h15
9h40	

If there is an emergency or in case of questions concerning the shuttle buses Atos/Savac you can call the following number on workdays between 6.30 am and 8 pm : +33 01 47 21 70 01 or send an email to [exploitation-nanterre@savac.fr](mailto:exploitation-nanterre@savac.fr) .